

2021

가

(3

- 42')



Oil Pattern Distance: **42 Feet**
 Forward Oil Total: **16.25 mL**
 Forward Boards Crossed: **325 Boards**

Reverse Brush Drop: **42 Feet**
 Reverse Oil Total: **6.7 mL**
 Reverse Boards Crossed: **134 Boards**

Oil Per Board: **50 uL**
 Volume Oil Total: **22.95 mL**
 Total Boards Crossed: **459 Boards**

	Start	Stop	Loads	Speed	Crossed	Start	End	Feet	T.Oil	TotalOil
1	2L	2R	1	14	37	0.0	0.0	0.0	1850	1850
2	5L	5R	2	14	62	0.0	3.9	3.9	3100	3100
3	7L	7R	2	14	54	3.9	7.8	3.9	2700	2700
4	7L	7R	1	18	27	7.8	10.3	2.5	1350	1350
5	9L	9R	2	18	46	10.3	15.4	5.1	2300	2300
6	10L	10R	2	22	42	15.4	21.6	6.2	2100	2100
7	11L	11R	3	22	57	21.6	30.9	9.3	2850	2850
8	2L	2R	0	26	0	30.9	42.0	11.1	0	0

Conditioner:
Type In or Select
One

TransferType:
Type In or Select
One

Forward

Reverse

Combined

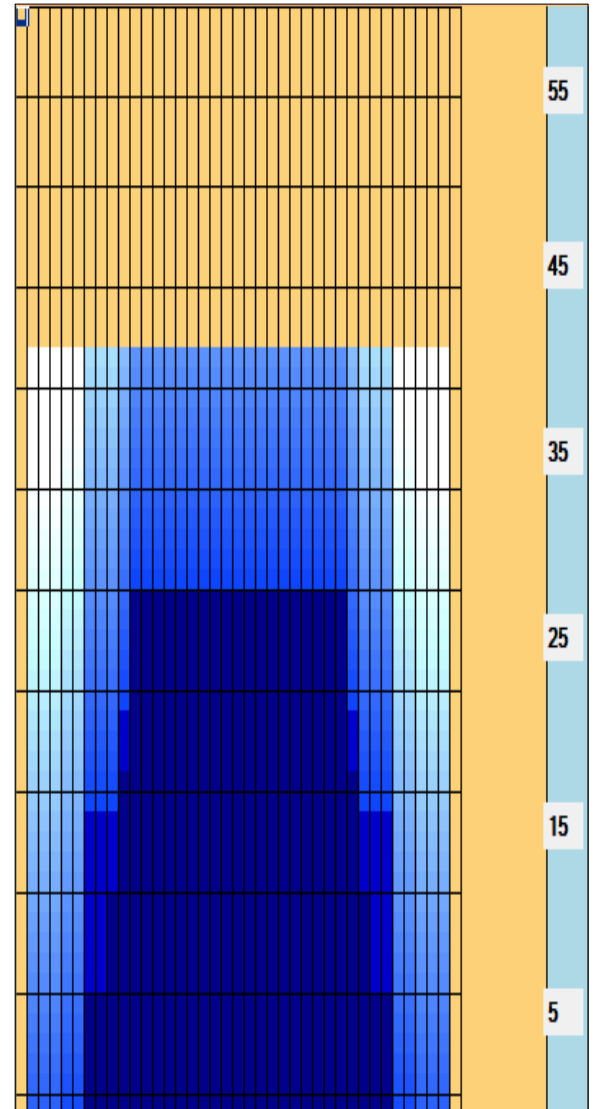
Buff

Forward Reverse More

	Start	Stop	Loads	Speed	Crossed	Start	End	Feet	T.Oil	TotalOil
1	2L	2R	0	30	0	42.0	30.0	-12.0	0	0
2	11L	11R	2	22	38	30.0	23.8	-6.2	1900	1900
3	10L	10R	2	18	42	23.8	18.7	-5.1	2100	2100
4	7L	7R	2	18	54	18.7	13.6	-5.1	2700	2700
5	2L	2R	0	14	0	13.6	0.0	-13.6	0	0

Forward Reverse More

Cleaner Ratio Main Mix 5:1 Forward Cleaner Ratio Back End Mix 5:1 Reverse



Item	3L-7L:18L-18R	8L-12L:18L-18R	13L-17L:18L-18R	18L-18R:17R-13R	18L-18R:12R-8R	18L-18R:7R-3R	
Description	Outside Track:Middle	Middle Track:Middle	Inside Track:Middle	Middle: Inside Track	Middle:Middle Track	Middle:Outside Track	
Track Zone Ratio	5.94	1.36	1	1	1.36	5.94	

