

Oil Pattern Distance: <b>43 Feet</b>	Reverse Brush Drop: <b>42 Feet</b>	Oil Per Board: <b>50 uL</b>
Forward Oil Total: <b>17.3 mL</b>	Reverse Oil Total: <b>6.8 mL</b>	Volume Oil Total: <b>24.1 mL</b>
Forward Boards Crossed: <b>346 Boards</b>	Reverse Boards Crossed: <b>136 Boards</b>	Total Boards Crossed: <b>482 Boards</b>

	Start	Stop	Loads	Speed	Crossed	Start	End	Feet	T.Oil	TotalOil
1	2L	2R	2	14	74	0.0	1.9	1.9	3700	3700
2	7L	7R	2	14	54	1.9	5.8	3.9	2700	2700
3	7L	7R	1	18	27	5.8	8.3	2.5	1350	1350
4	9L	9R	3	18	69	8.3	15.9	7.6	3450	3450
5	10L	10R	4	22	84	15.9	28.3	12.4	4200	4200
6	11L	11R	2	22	38	28.3	34.5	6.2	1900	1900
7	11L	11R	0	26	0	34.5	43.0	8.5	0	0

Conditioner:  
Type In or Select One

TransferType:  
Type In or Select One

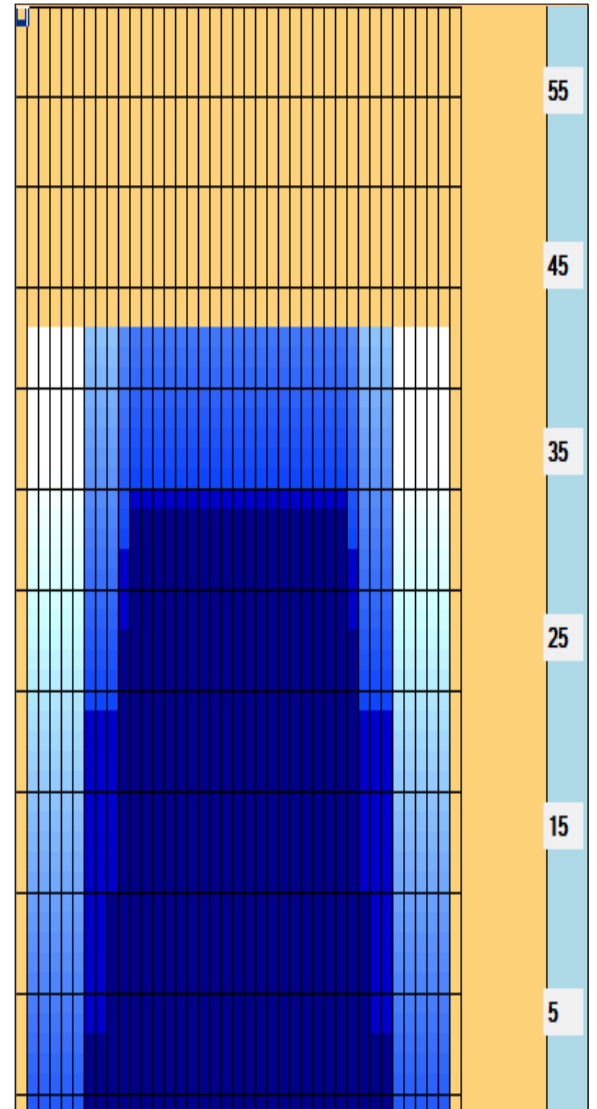
Forward  
Reverse  
Combined  
Buff

Forward Reverse More

	Start	Stop	Loads	Speed	Crossed	Start	End	Feet	T.Oil	TotalOil
1	2L	2R	0	30	0	43.0	35.0	-8.0	0	0
2	11L	11R	1	22	19	35.0	31.9	-3.1	950	950
3	10L	10R	3	18	63	31.9	24.3	-7.6	3150	3150
4	7L	7R	2	18	54	24.3	19.2	-5.1	2700	2700
5	2L	2R	0	14	0	19.2	0.0	-19.2	0	0

Forward Reverse More

Cleaner Ratio Main Mix 5:1 Forward Cleaner Ratio Back End Mix 5:1 Reverse



Item Description	3L-7L:18L-18R Outside Track:Middle	8L-12L:18L-18R Middle Track:Middle	13L-17L:18L-18R Inside Track:Middle	18L-18R:17R-13R Middle: Inside Track	18L-18R:12R-8R Middle:Middle Track	18L-18R:7R-3R Middle:Outside Track
Track Zone Ratio	6.67	1.35	1	1	1.35	6.67

