

2021

가

(2 - 40')



Oil Pattern Distance: **40 Feet**
 Forward Oil Total: **13.35 mL**
 Forward Boards Crossed: **267 Boards**

Reverse Brush Drop: **38 Feet**
 Reverse Oil Total: **7.75 mL**
 Reverse Boards Crossed: **155 Boards**

Oil Per Board: **50 uL**
 Volume Oil Total: **21.1 mL**
 Total Boards Crossed: **422 Boards**

	Start	Stop	Loads	Speed	Crossed	Start	End	Feet	T.Oil	TotalOil
1	2L	2R	1	14	37	0.0	0.0	0.0	1850	1850
2	7L	7R	3	14	81	0.0	5.9	5.9	4050	4050
3	7L	7R	1	18	27	5.9	8.4	2.5	1350	1350
4	9L	9R	1	18	23	8.4	10.9	2.5	1150	1150
5	10L	10R	2	22	42	10.9	17.1	6.2	2100	2100
6	11L	11R	3	22	57	17.1	26.4	9.3	2850	2850
7	2L	2R	0	26	0	26.4	40.0	13.6	0	0

Conditioner:
Type In or Select
One

TransferType:
Type In or Select
One

Forward



Reverse



Combined



Buff

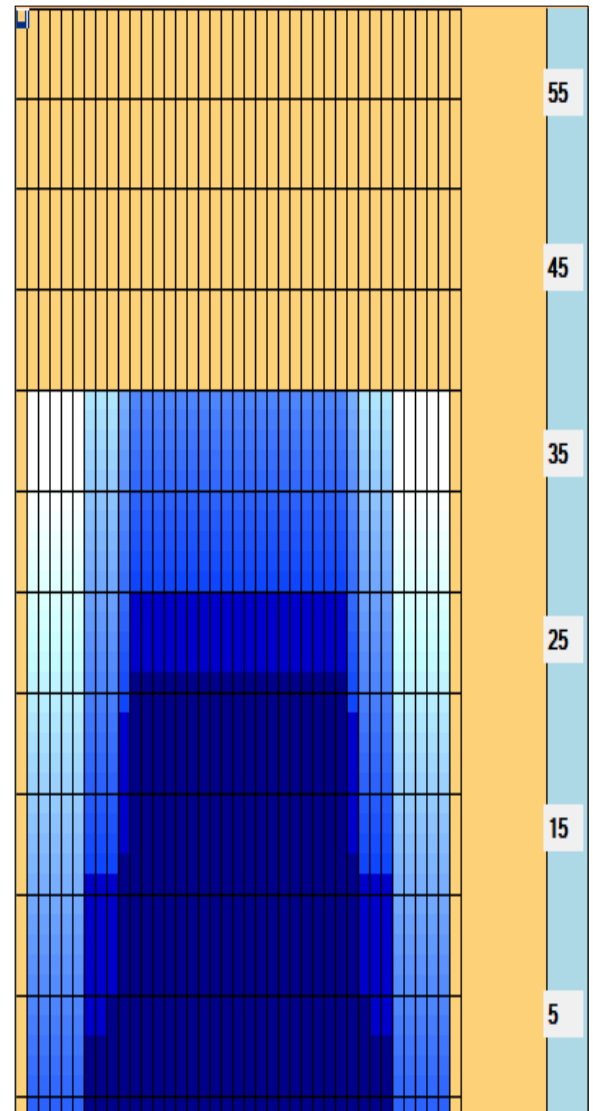


Forward Reverse More

	Start	Stop	Loads	Speed	Crossed	Start	End	Feet	T.Oil	TotalOil
1	2L	2R	0	30	0	40.0	30.0	-10.0	0	0
2	11L	11R	2	22	38	30.0	23.8	-6.2	1900	1900
3	10L	10R	3	18	63	23.8	16.2	-7.6	3150	3150
4	7L	7R	2	18	54	16.2	11.1	-5.1	2700	2700
5	2L	2R	0	14	0	11.1	0.0	-11.1	0	0

Forward Reverse More

Cleaner Ratio Main Mix 5:1 Forward Cleaner Ratio Back End Mix 5:1 Reverse



Item	3L-7L:18L-18R	8L-12L:18L-18R	13L-17L:18L-18R	18L-18R:17R-13R	18L-18R:12R-8R	18L-18R:7R-3R	
Description	Outside Track:Middle	Middle Track:Middle	Inside Track:Middle	Middle: Inside Track	Middle:Middle Track	Middle:Outside Track	
Track Zone Ratio	8.18	1.41	1	1	1.41	8.18	

