

2018 대한장애인체육회장배 전국장애인볼링대회 (37')



Oil Pattern Distance: **37 Feet**

Forward Oil Total: **14.5 mL**

Forward Boards Crossed: **290 Boards**

Reverse Brush Drop: **35 Feet**

Reverse Oil Total: **5.8 mL**

Reverse Boards Crossed: **116 Boards**

Oil Per Board: **50 uL**

Volume Oil Total: **20.3 mL**

Total Boards Crossed: **406 Boards**

	Start	Stop	Loads	Speed	Crossed	Start	End	Feet	T.Oil	TotalOil
1	2L	2R	2	14	74	0.0	1.9	1.9	3700	3700
2	4L	4R	2	18	66	1.9	7.0	5.1	3300	3300
3	7L	7R	3	22	81	7.0	16.3	9.3	4050	4050
4	9L	9R	3	26	69	16.3	27.3	11.0	3450	3450
5	2L	2R	0	26	0	27.3	37.0	9.7	0	0

	Start	Stop	Loads	Speed	Crossed	Start	End	Feet	T.Oil	TotalOil
1	2L	2R	0	30	0	37.0	15.0	-22.0	0	0
2	7L	7R	2	22	54	15.0	8.8	-6.2	2700	2700
3	5L	5R	2	18	62	8.8	3.7	-5.1	3100	3100
4	2L	2R	0	14	0	3.7	0.0	-3.7	0	0

Conditioner:
Type In orSelect
One

TransferType:
Type In orSelect
One

Forward



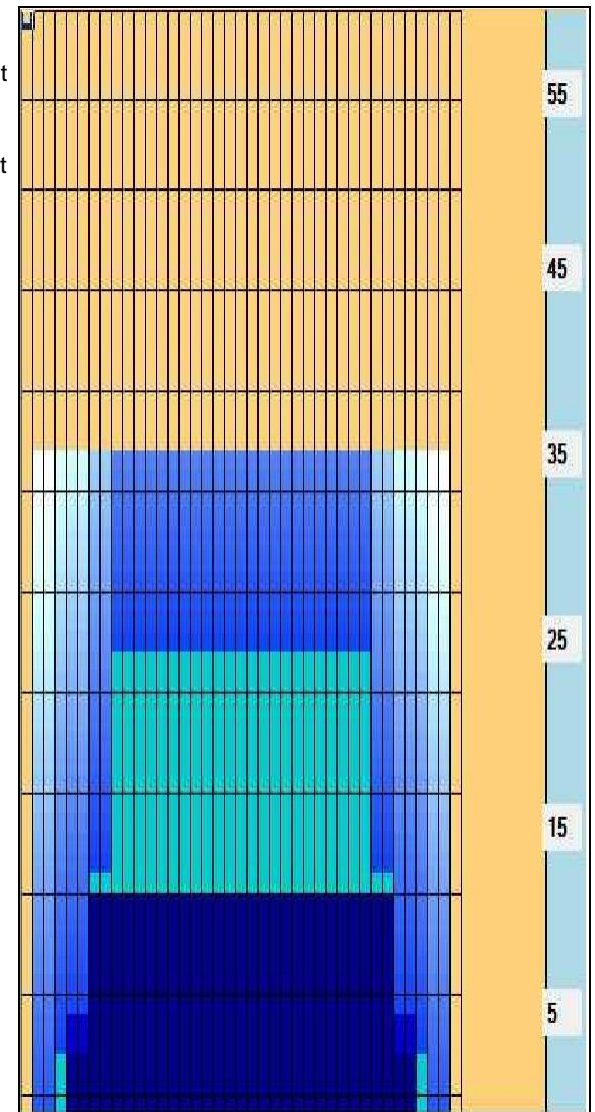
Reverse



Combined



Buff



Cleaner Ratio Main Mix 5:1 Forward

Cleaner Ratio Back End Mix 5:1 Reverse

Item	3L-7L:18L-18R	8L-12L:18L-18R	13L-17L:18L-18R	18L-18R:17R-13R	18L-18R:12R-8R	18L-18R:7R-3R
Description	Outside Track:Middle	Middle Track:Middle	Inside Track:Middle	Middle: Inside Track	Middle:Middle Track	Middle:Outside Track
Track Zone Ratio	2.41	1.04	1	1	1.04	2.41

